


TOYOTA *LET'S
GO
BEYOND*

BEYOND ZERO

NEW
CAMRY
HEV

THE ULTIMATE CLASS AND VIRTUE



IT'S TIME FOR
EVERYONE

THE EXTRAORDINARY ELEGANCE

Powered by two sophisticated sources, the New Toyota Camry attractive Hybrid system provides high-performance and eco-friendly modes. The ultimate elegance that makes an extraordinary vehicle to drive now and later.



NEW LOWER GRILLE (All Type)

The aggressive statement, along with the advanced technology image is shown with slim and bold Upper Grille and wide Lower Grille.



NEW HAMMERHEAD DESIGN (All Type)

The astonishing hammerhead front design create a majestic presence from the very first impression.

SENSE OF LUXURY

The elegance of the New Toyota Camry is elevated by its luxurious design combined with breakthrough technology. It leaves a lasting impression, as convenience is always at your command.



HEV 5th GEN

Power up your sophisticated driving moments with a better responsive performance of the newest engine and also improved battery capability for maximum efficiency in every journey.

BATTERY WARRANTY

Comes with 8 years/160,000 km lifespan battery warranty covered by Toyota to bring your journey without worry.



NEW OVERALL REAR DESIGN (All Type)

The elegant rear lamp and rear design create a dashing and enchanting look every time you drive.



NEW STRIKING SILVER 18" ALLOY WHEEL (All Type)

Designed with attention-to-detail craftsmanship & sportiness that creates an extraordinary presence.



THE INVENTION OF INNOVATION

In a constant search of improvements, Toyota New Global Architecture aims to achieve the fundamental vehicle platform. All newly created structure is made to maximize driving experience, uniting the drive and vehicle.

- OUTSTANDING PERFORMANCE
- BODY RIGIDITY
- LOW CENTER OF GRAVITY
- DOUBLE WISHBONE SUSPENSION
- PRECISE HANDLING
- EXCELLENT VISIBILITY





NEW SOPHISTICATED
CABIN INTERIOR (All Type)



NEW EXCITING PANORAMIC ROOF (All Type)



NEW EXTRAVAGANT
ORNAMENTATION (All Type)



NEW 12.3" HEAD UNIT DISPLAY (All Type)



WIRELESS CHARGING (All Type)



NEW PLEASANT AIR PURIFIER
WITH AUTO 3 ZONE AC (Only HEV Type)



IMMEASURABLE COMFORT

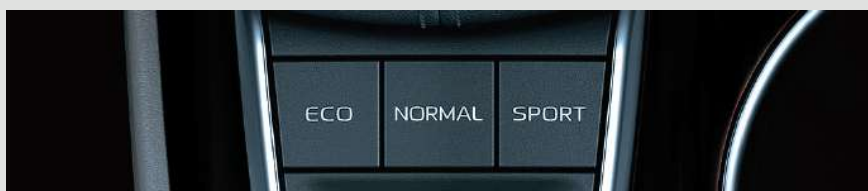
New sophisticated interior design features progressive technologies surround the cabin. It is installed with **New Exciting Panoramic Roof** and hi-tech automation so you can enjoy the nature. **New Extravagant Ornamentation** provides authentic wooden decorations with attention-to-detail craftsmanship for your luxurious experience.

Driving is safer and more comfortable with the **New 12.3" Head Unit Display**. A marvelous invention designed to give you pure control of your entertainment on a bigger screen, enhance your visibility with advanced parking assist from the **Surround Monitor** and keep you always at ease as the head unit installed for checking toll cards (e-Money & Flazz).

Moreover, the fascinating **JBL Sound System**, the **New Pleasant Air Purifier**, and **Dedicated Climate Control with Auto 3 Zone (HVAC)** surrounding the cabin will enrich enjoyment while driving and create immeasurable pleasure in every driving moment. Compact technology will also ease your daily mobility with the support of **Wireless Charging**.

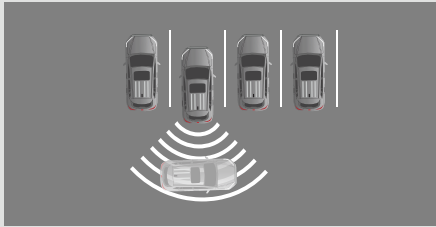


*EV Mode is only available for HEV Type



ADJUSTABLE ADVANCED DRIVING MODE

Two power sources from Toyota's hybrid encourage you to drive with comfort and responsibly in a sophisticated way. You can use an electric motor powered by Toyota battery technology in **EV Mode* (Only HEV Type)** to reducing the carbon footprint and save the environment for the next generation. Furthermore, you can improve the performance with lower fuel consumption in **Eco Mode** or switch into **Sport Mode** to enjoy the high-performance driving moments.



REAR CROSSING TRAFFIC ALERT

Broad rear vision enhancer to support safety and detects an object behind while maneuvering backwards.



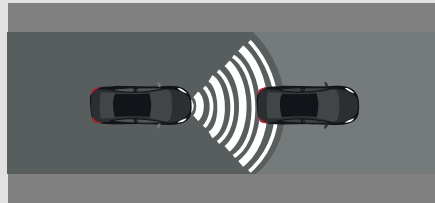
BLIND SPOT MONITOR (BSM)

Enhance visibility on the road by giving a signal and alerting the driver to maintain a safe driving distance at once to prevent the rear of the vehicle from crashing.



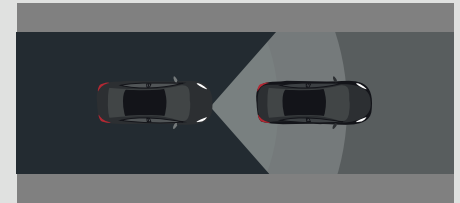
7 SRS AIRBAG

Surrounded with 7 SRS airbags to reduce impacts and provide every passenger's safety and comfort even at crucial moments.



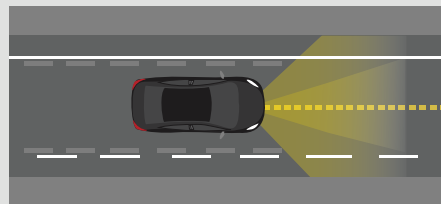
DYNAMIC RADAR CRUISE CONTROL

Detects a preceding vehicle and follows within a safe distance, therefore reducing the fatigue of long driving.



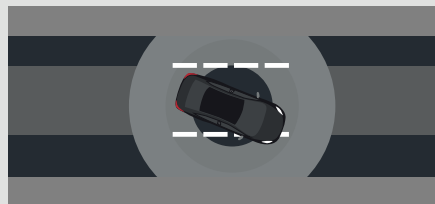
PRE COLLISION SYSTEM (PCS)

Integrated camera and radar system that helps to reduce crash risk and damage in a frontal collision.



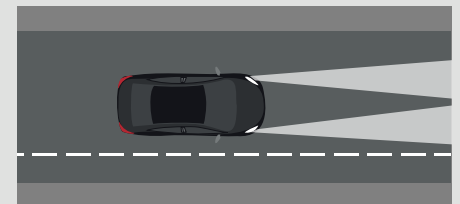
LANE TRACING ASSIST

Driving track safety assistance to keep the driver on track with providing light correction.



LANE DEPARTURE ALERT (LDA)

Keep the vehicle on the safe lane, thus making the driver confident and feel safe while driving.



AUTOMATIC HIGH BEAM (AHB)

Automatically shift from high to low beam to help drivers maintain safe driving.



(All Type)

An integrated solution that you can access through mTOYOTA application. Giving you comfort, providing peace of mind, and keeping you stay connected with your car.

*Accessed with mTOYOTA

SAFETY & CONVENIENCE



FIND MY CAR

Accurately know where the vehicle is parked to provide you with a feeling of safety and convenience.



STOLEN VEHICLE TRACKING

Know your vehicle location assisted by Toyota Call Center to provide you security all the time.



GUEST DRIVER ALERT

Enable specific push notification settings (Distance Radius, Max. Speed, and Max. Idle Time) when you permit other driver to use the vehicle (Ex: Valet Parking).



GEOFENCING

Giving alert if your vehicle is outside the authorized zone to ensure your security at all times.



VEHICLE INFO

Provide your vehicle's condition and warning notification to give you more convenience while driving.



TIME FENCING

Get push notification when your vehicle is being used (Engine On) during specified time period based on your preference.



SPEED & IDLE ALERT

Get push notification when your vehicle exceeds the defined speed limit & engine idle duration based on your preference.



REMOTE IMMOBILIZER **NEW**

Anti-theft system by remotely disabling your vehicle's engine to prevent unauthorized use.



IN-CAR WIFI HOTSPOT **NEW**

Built-in WiFi to make you stay connected in every journey that provides you convenience to access the multimedia.

PEACE OF MIND



INQUIRY & SUPPORT CENTER

Direct assistance from Toyota Call Center to solve your problems. Give you more ability to keep moving forward.



DRIVING REPORT

Summarize your driving sessions by daily & monthly report.



EMERGENCY ROADSIDE ASSISTANCE

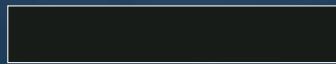
Provide an SOS button if you get in an accident. You will be assisted by the Toyota Call Center to be directed to the Emergency Road Assistance (ERA) provider to make you feel safer while driving.

NEW CAMRY

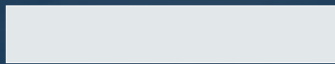
SPECIFICATIONS

MODEL TYPE			2.5 V*	2.5 HEV*
DIMENSI/DIMENSIONS				
PANJANG/OVERALL LENGTH		mm	4.920	
LEBAR/OVERALL WIDTH		mm	1.840	
TINGGI/OVERALL HEIGHT		mm	1.445	
JARAK POROS RODA/WHEELBASE		mm	2.825	
JARAK PUJAK/TREAD	DEPAN/FRONT	mm	1.580	
	BELAKANG/REAR	mm	1.590	
SASIS/CHASSIS				
TRANSMISI/TRANSMISSION		8AT	Otomatis dengan Continuous Variable Transmission/ Automatic with Continuous Variable Transmission (CVT)	
PERBANDINGAN GIGI AKHIR/FINAL GEAR RATIO		2.802	3.193, 3.389	
STEERING GEAR		Rack & Pinion		
SUSPENSI/SUSPENSION	DEPAN/FRONT	MacPherson Strut		
	BELAKANG/REAR	Multi Link		
TIPE REM/BRAKE TYPE	DEPAN/FRONT	16" Ventilated Disc Brake with Floating Caliper 1-Cylinder		
	BELAKANG/REAR	16" Solid Disc Brake with Floating Caliper 1-Cylinder		
REM PARKIR/PARKING BRAKE		Tuas Elektrik / Electrical Switch		
UKURAN BAN/TIRE SIZE		235 / 45 R18 Aluminium Wheel		
MESIN/ENGINE		A25-FKS	A25-FXS	
TIPE MESIN/ENGINE TYPE		4-Cylinders In-line	Hybrid, 4-Cylinders In-line	
ISI SILINDER/DISPLACEMENT		cc	2.487	
TORSI MAKSIMAL/MAX. TORQUE	ENGINE	Nm/rpm	240 / 4.000-5.000	221 / 3.600 - 5.200 (Engine)
	ELECTRIC MOTOR	Nm	-	208 (Motor)
DAYA MAKSIMAL/MAX. POWER	ENGINE	Ps/rpm	204 / 6.600	227 (System), 186 / 6.000 (Engine)
	ELECTRIC MOTOR	Ps	-	135 (Motor)
EMISSION CERTIFICATION		Euro 4		
BAHAN BAKAR/FUEL		Gasoline		
FUEL TANK CAPACITY		ltr	60	50
SAFETY & SECURITY				
TOYOTA SAFETY SENSE (TSS)		TSS 3		
SRS AIRBAG		Dual Front SRS + Front Side + Curtain + (D) Knee		
ABS, EBD, BA		with + VSC, HAC		
SMART ENTRY		with Start - Stop System		
REAR CAMERA		with Back Guide Surround Monitor		
CHILD RESTRAINT SYSTEM		ISOFIX + Tether		
DRIVER MONITORING SYSTEM		with		
BLIND SPOT MONITOR		with		
BACK & CORNER SENSOR		with		
<ul style="list-style-type: none">• Untuk peningkatan mutu dan penyesuaian dengan perkembangan teknologi, PT Toyota-Astra Motor sewaktu-waktu dapat mengubah spesifikasi, perlengkapan standar atau data lain dalam lembar spesifikasi ini. / PT Toyota-Astra Motor reserves the right to alter any details of specifications and equipments without prior notice.• Spesifikasi dan kelengkapan dapat berbeda dengan gambar di brosur ini, tergantung model kendaraan. / Details and specifications may differ from the picture shown, depending on models.				

COLOR OPTIONS



ATTITUDE BLACK*



PLATINUM WHITE PEARL*

Pilihan warna dalam brosur dapat sedikit berbeda dengan warna mobil sesungguhnya.
/ Color options in the brochure might slightly be different from the actual color of the cars.

*Waktu inden minimal 3 bulan (perkiraan waktu bisa berubah tergantung dengan keadaan pabrik). / With minimum 3 months indent time (the time could be changed depending on factory state).



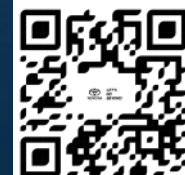
SCAN HERE
FOR MORE INFORMATION



**TOYOTA
CUSTOMER CARE**
☎ 1500315 | 📞 08111500315 | 🌐 toyotaid



**TOYOTA
INTERACTIVE
VIRTUAL ASSISTANT**
☎ 08111500315 | 🌐 toyotaid



T-CARE
Always Serve, Always Care

**SCAN HERE FOR
MORE INFORMATION**



NEW
CAMRY
HEV
**SCAN HERE FOR
MORE INFORMATION**

Authorized Toyota Dealer

CETAKAN / II / 10 / 2025

www.toyota.astra.co.id

PT TOYOTA-ASTRA MOTOR
Jl. Laksda Yos Sudarso Sunter II
Jakarta 14330

TOYOTA
Berbagi
Bersama Membangun Indonesia



*LET'S
GO
BEYOND*

